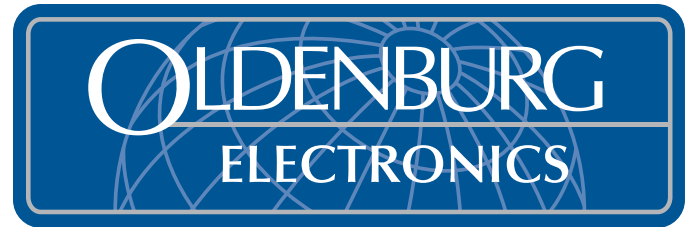


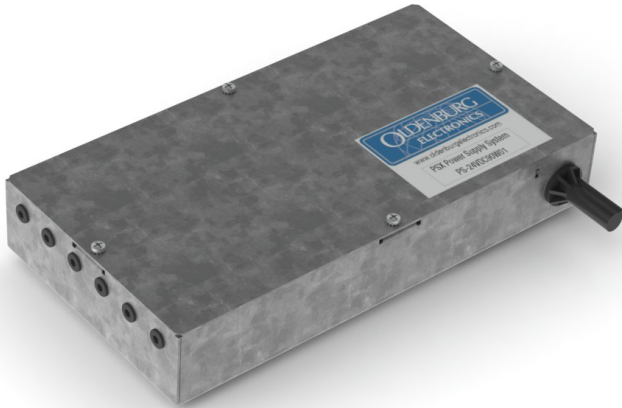
PS-24 Series

Remote Power Supply for LED Luminaires



www.OldenburgElectronics.com

PS-24VDC90W01



The PS Series of remote LED power supplies provide a remote 24VDC power distribution system for LED luminaires. The maximum output of 90W can power an entire room's light fixtures, while offering increase AC-DC power conversion efficiency vs. smaller, in-fixture supplies.

PS models are code-compliant products ready for surface or recessed mounting and are suitable for plenum installations, allowing lighting designers and fixture OEMS to return their focus to lighting and light control.

Features

- 120VAC or 277VAC input
- Class 2 outputs
- Dedicated, contractor-friendly wiring compartments for line voltage input and low-voltage output
- Integral output connections allow parallel/bus wiring or home-run wiring of powered luminaires
- Available with analog (0-10V) or digital dimming interface or DMX-512 interface for 3-channel color-mixing

Applications

- Offices
- Hospitality areas
- Conference Rooms
- Exterior
- Residential

Certifications

- UL 1598 Listed Fixture Fitting
- Suitable for recessed installation (non-IC)

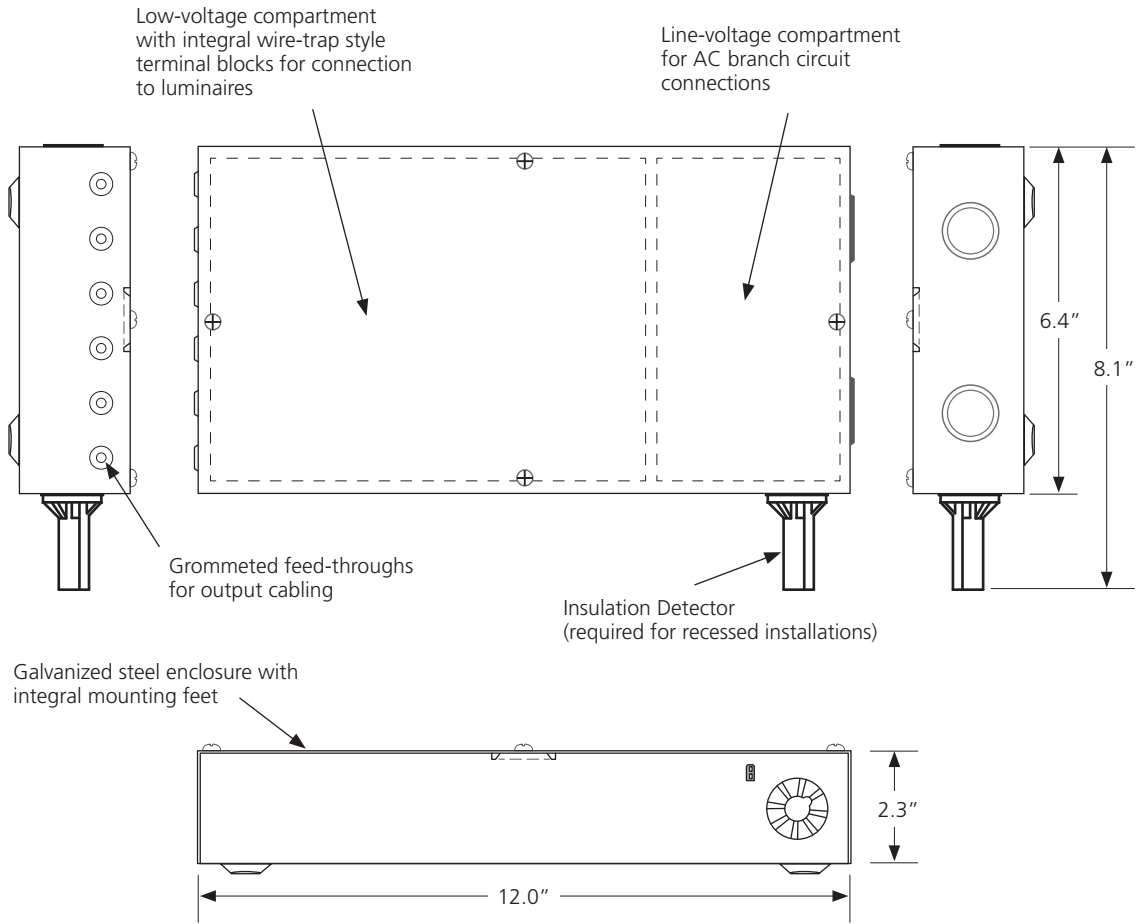
Models - add (120V) or (277V) after product name to specify input voltage

Product Name	Output	Dimming/Control	Full Load Efficiency	P.F.
PS-24VDC90W01	24V, 90W	None	88%	0.95
PS-24VDC90W01-DIM10	24V, 90W	0-10V Analog	87%	0.95
PS-24VDC40W01	24V, 40W	None	85%	0.90
PS-24VDC40W01-DIM10	24V, 40W	0-10V Analog	85%	0.90
PS-24VDC40W01-DIM(EB) (Note 1)	24V, 40W	Lutron EcoSystem	85%	0.90
PS-24VDC90W01-RGB (Notes 1, 2)	24V, 90W	DMX-512	88%	0.95
PS-24VDC40W01-RGB (Notes 1, 2)	24V, 40W	DMX-512	85%	0.90

¹ Maximum 20 ft. remote wiring distance to each connected luminaire

² All outputs share a single DMX address set (if set to address "1", red will be at DMX address 1, green at DMX address 2, and blue at DMX address 3 etc)

Dimensions



Application Example Block Diagram

